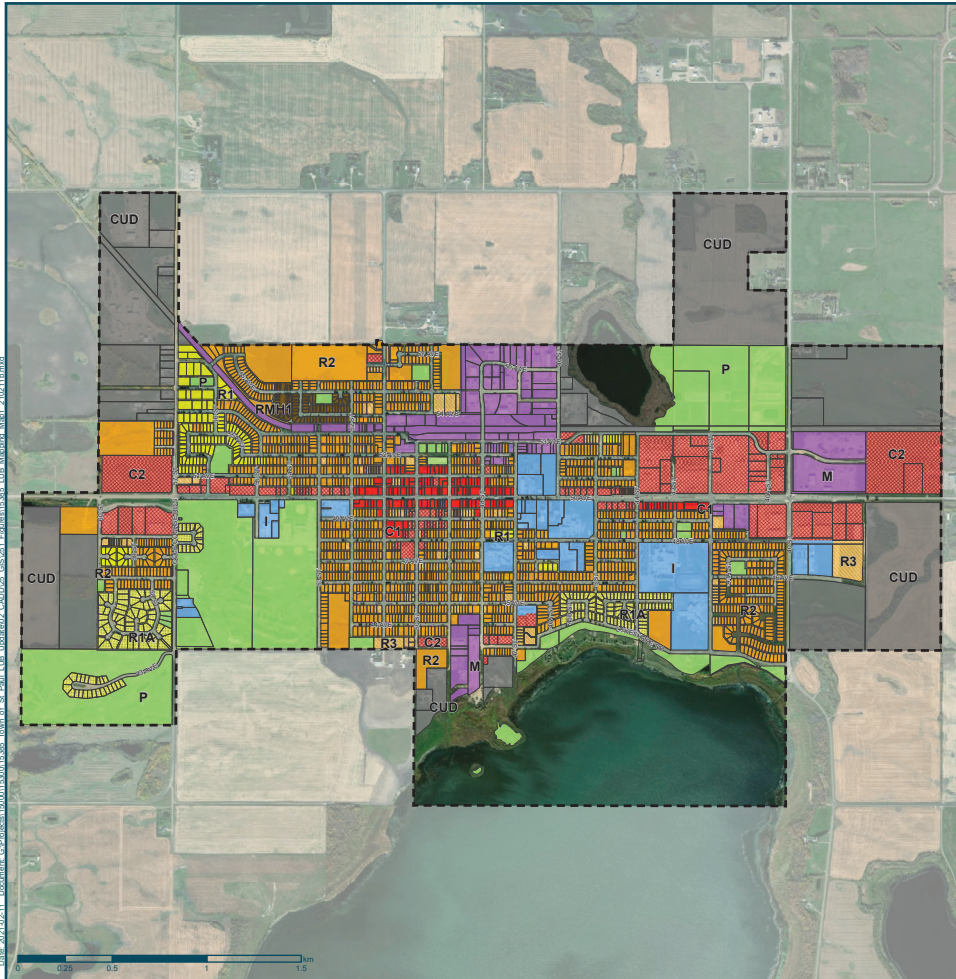


Map Amendments:

1. Bylaw 2021-10: E 1/2 of NW 3-58-9-W4M containing +/- 20 acres rezoned from CUD to C2 - passed on June 14, 2021

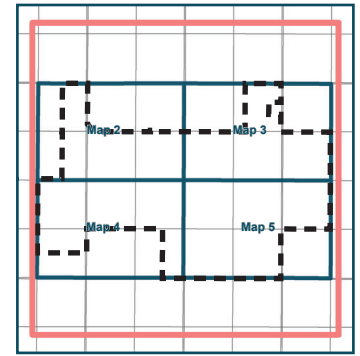


**TOWN OF ST. PAUL
LAND USE BYLAW
Map 1**

LAND USE DISTRICTS

- R1 - Residential Low Density
- R1A - Residential Estate
- R1B - Residential Small Lot*
- R2 - Residential Medium Density
- R3 - Residential High Density
- RMH1 - Residential Manufactured Home Subdivision
- RMH2 - Residential Manufactured Home Park*
- C1 - Central Commercial
- C2 - General Commercial
- M - Industrial
- P - Community
- I - Institutional
- CUD - Controlled Urban Development

* District is available in the Land Use Bylaw but has not yet been applied to any lands within the Town



Scale
1:20,000

Map Updated: February 2021
 Produced by: S&S Engineering and Land Services Ltd.
 NAD 1983 UTM 11S
 Not to be copied in whole or in part.

